

MINIATURE AMERICAN BULLY BREED STANDARD

FOREWORD

The American Bully has been around since approximately 2004 as a recognized “breed”. The first American Bullies were American Pit Bull Terriers (APBTs) and/or American Staffordshire Terriers (Amstaffs) that were beyond the “standard” set up for those breeds within the United Kennel Club (UKC) and American Kennel Club (AKC) respectively. The American Bullies were cast out by those registries for not fitting their respective breed standards for the APBTs/AmStaffs. During this time period there were other breeds that were brought into the American Bullies that were not readily spoken about in the breed’s history which consists of American Bulldog, English Bulldog, and Staffordshire Bull Terrier just to name a few that were added by certain bloodlines to enhance the look the breeders were trying to achieve above and beyond the original breed. Over the years the American Bully has begun to get a “desired” look that sets it apart from the other breeds, and is now a recognized breed by the UKC. The American Bully is a continuing breed that still to this day has various looks defined by bloodline, but with that said the American Bully look is starting to become more uniformed as the years have gone by. The Miniature American Bully (also known as Micro American Bully and/or the Mini Bull) is a new breed in development based off of the modern American Bully bloodlines yet with the intent of “shrinking” the results to shorter than what exists within the American Bully breed standards. Its originator, Rick Gomez, idealized that creating it as a separate breed from the American Bully versus lobbying to have all of the registries who recognize it to create another variety (in addition to the Pocket, XL, Standard, Extreme, and Classic varieties) would be the correct course of action. In time once the breed has been standardized and consistent he may take the hard work he has done within the Breeders Cup Association to other registries.

GENERAL IMPRESSION

The Miniature American Bully should give the impression of great strength for its short in stature size, with a muscular body and blocky head. The Miniature American Bully should have the appearance of heavy bone structure with a bully build, the breed is a “head and front breed” chest should be wide to match blocky head type. The **Miniature American Bully should NOT look like a short APBT or Amstaff.**

Eliminating fault: viciousness or extreme shyness.

Disqualification: Unilateral or bilateral cryptorchid (one or both testicles have not dropped).

HEAD

Medium length, deep through, broad skull, very pronounced cheek muscles, distinct stop, and high set ears.

EARS - High set and may be natural or cropped without preference. Prick, or flat, wide ears are not desired.

Disqualifications: Unilateral or bilateral deafness.

EYES - All colors except albinism. Eye shape would be round to oval, low down in skull and set far apart.

Serious Faults: Bulging eyes; both eyes not matched in color.

Faults: Blue Eyes; eyes that are narrow set

Disqualification: Blindness in either or both eyes not caused by injury.

MUZZLE - Short-Medium rounded on upper side or slightly squared to fall away abruptly below eyes. Jaws well defined.

Under jaw to be strong and have biting power.

LIPS - semi-close and even

BITE - scissor bite

Faults: Bite undershot or overshot

NOSE - all colors acceptable.

Faults: Snipey muzzle; weak lower jaw.

Serious Faults: Teeth or tongue showing when the mouth is closed.

NECK - Heavy, slightly arched, tapering from shoulders to back of skull-minimal or no loose skin.

Faults: Neck too thin or weak.

SHOULDERS - Strong and muscular with blades wide.

BACK - Short to medium back. Slight sloping from withers to rump or straight accepted with gentle short slope at rump to base of tail.

BODY - Massive, deep, and wide chest, deep in rear and all ribs close together. Forelegs set rather wide apart to permit much chest development. Chest should be very deep and broad.

TAIL - Short to medium in comparison to size, low set, tapering to a fine point ending at the rear hock.

Faults: Kinks, knots, and short tails are also faults and accepted but not preferred in the show ring.

Eliminating fault: Curled, docked, and/or twisted tails

LEGS:

Front legs - straight front legs, Large and round bones, pasterns upright are preferred.

Fault: Weak pasterns

FEET:

Should be of moderate size and compact.

A slight turning outwards of the feet up to 15 degrees is accepted.

Faults: Feet measuring between 15 and 45 degrees are accepted but not preferred.

Serious fault: Feet measuring between 45 and 90 are accepted but considered a serious fault.

Disqualification: Feet measuring beyond 90 degrees when stacked are disqualifying.

HINDQUARTERS - The hindquarters are strong, muscular, and broad. The rump is well filled in on each side of the tail and deep from the pelvis to the crotch. The bone, angulation, and musculature of the hindquarters are in balance with the forequarters. The thighs are well developed with thick, easily discerned muscles. Viewed from the side, the hock joint is well bent and the rear pasterns are well let down and perpendicular to the ground. Viewed from the rear, the rear pasterns are straight and parallel to one another.

Faults: Narrow hindquarters; hindquarters shallow from pelvis to crotch; lack of muscle; straight or over angulated stifle joint, cow hocks, and sickle hock.

GAIT - Should be effortless and powerful. The action must, however, be unrestrained, free and vigorous with powerful drive off the rear. Some paddling and lumber accepted

COAT - The coat is glossy and smooth, close, and moderately stiff to the touch.

Faults: Curly hair

Disqualification: Long coat.

COLOR - All colors and patterns are accepted.

SIZE:

Height and weight should be in proportion to the dog and measured from the withers.

- Height

-- Male: 14" and under; Females: 13" and under

MISCELLANEOUS - There are no weight limitations or requirements for the breed, but dogs should not be obese and should be able to move correctly.

FAULTS LISTING:

Faults:

Bulging eyes
Both eyes not matched in color
Blue eyes
Eyes that are narrow set
Bite undershot or overshot
Tails with kinks and/or knots
Short tails that do not reach the hock
Long tails that go beyond the hock
Undershot or overshot mouths
Snipey muzzle
Weak lower jaw
Teeth or tongue showing when the mouth is closed
Severe turned fronts
Front feet that are between 15 and 90 degrees
Neck too thin or weak
A coat with curly hair
Weak pasterns
Narrow hindquarters
Hindquarters shallow from pelvis to crotch
Lack of muscle

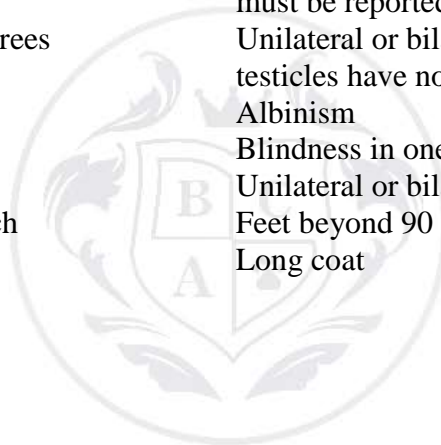
Straight or over angulated stifle joint
Cow hocks and sickle hock
Aggressive behavior towards animals and humans.

Eliminating fault: (A dog with an Eliminating Fault is not to be considered for placement in a conformation event, nor are they to be reported to BCA.)

Curled, docked, and/or twisted tails
Viciousness or extreme shyness

Disqualifications: (A dog with a disqualification must not be considered for placement in a conformation event, and its registration number must be reported to BCA.)

Unilateral or bilateral cryptorchid (one or both testicles have not dropped)
Albinism
Blindness in one or both eyes not caused by injury
Unilateral or bilateral deafness
Feet beyond 90 degrees when stacked
Long coat



BREEDERS
CUP ASSOCIATION